

22°4'30"E

22°6'0"E

34°1'0"30"S

34°1'0"30"S

34°1'2'0"S

34°1'2'0"S

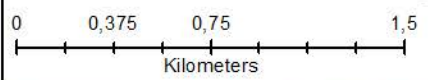
22°4'30"E

22°6'0"E

Louis Fourie Precinct
Development
Mossel Bay Local Municipality
Western Cape Province
Butterfly Map

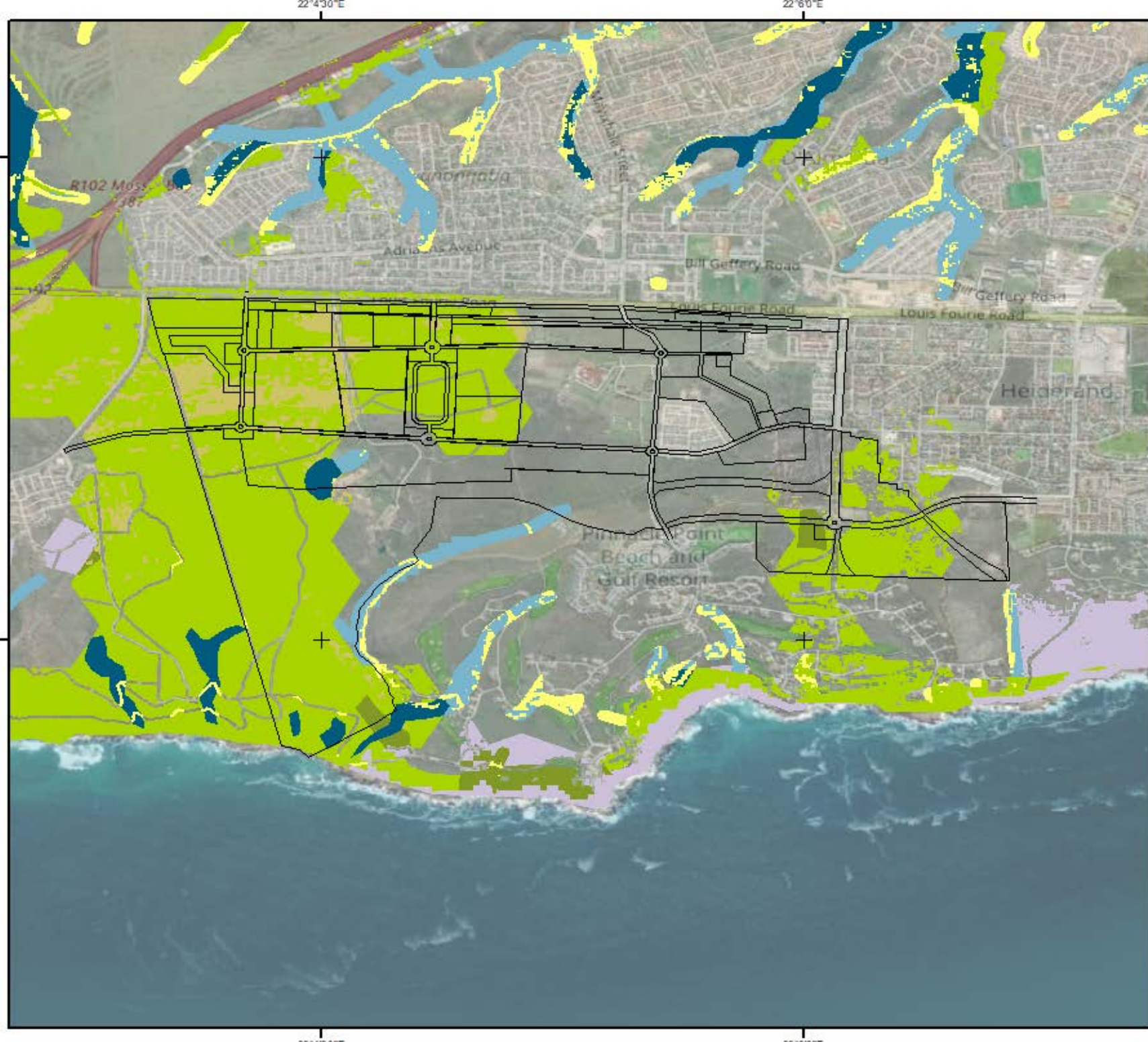
Legend

- Louis Fourie Mixed-Use Development
- Aboedes_thyra_orientis_medium



Projection: WGS_1984
Datum: D_WGS_1984
Map Designed By: Jonathan Bell
Contact Details: 021 702 2884 / 072 037 3034
Date: 19 November 2020
Drawing: Louis Fourie Precinct

A3



Louis Fourie Precinct
Development
Mossel Bay Local Municipality
Western Cape Province
CBA Map

—Louis Fourie Mixed-Use Development

Mossel Bay CBA 1
SubCat2

- CBA: Terrestrial
- CBA: Forest
- CBA: River
- CBA: Estuary
- CBA: Wetland

Mossel Bay CBA 2
SubCat1

- CBA2: Aquatic
- CBA2: Terrestrial

Mossel Bay ESA 1
SubCat1

- ESA: Aquatic
- ESA: Terrestrial

Mossel Bay ESA 2
SubCat1

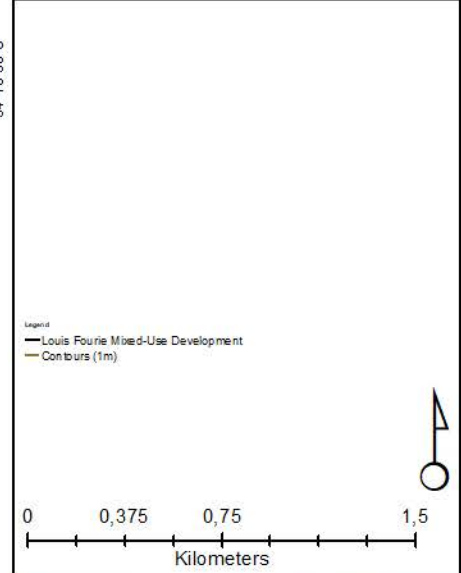
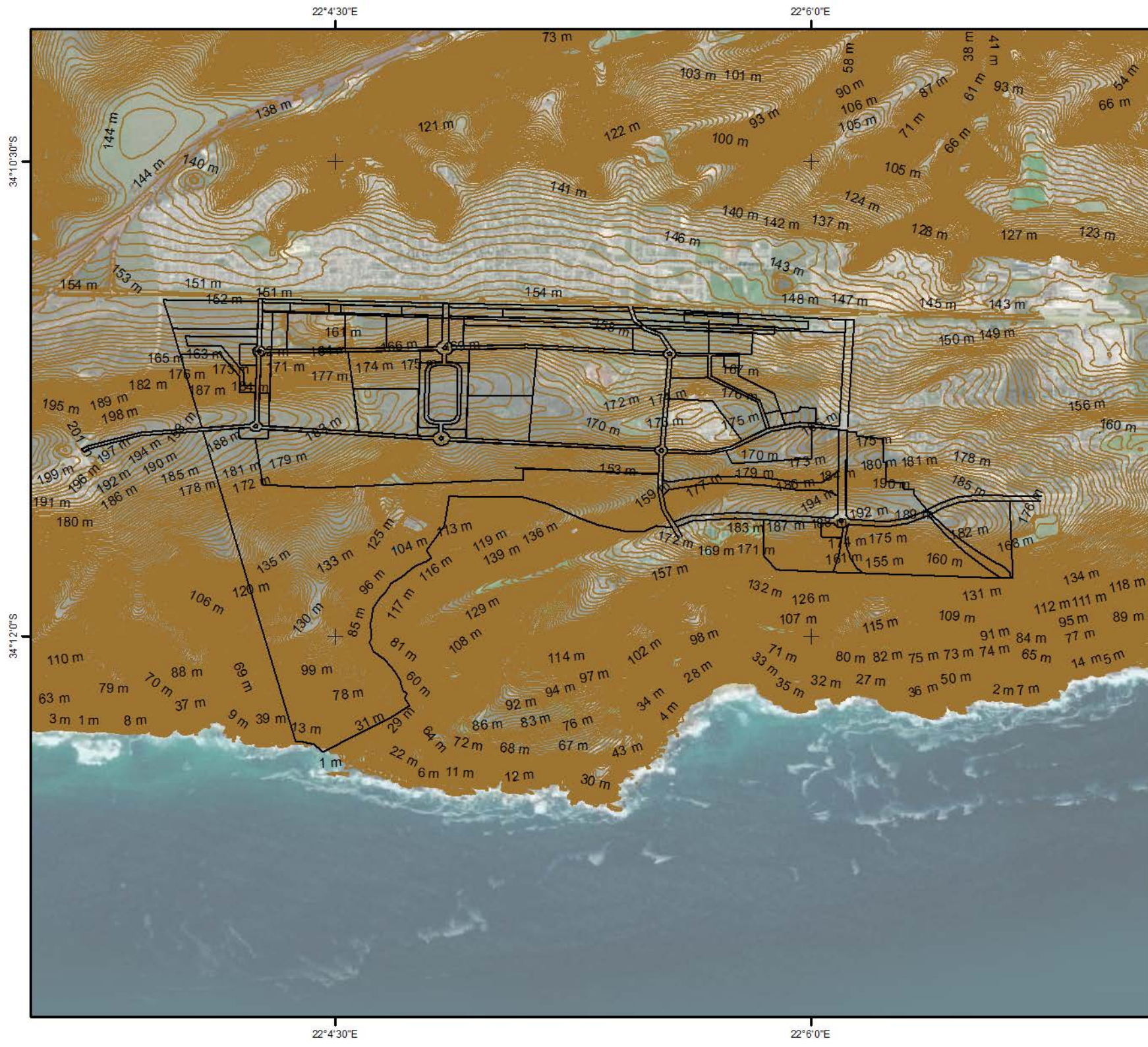
- ESA2: Restore from plantation or high density/
- ESA2: Restore from other land use
- ESA2: Restore where appropriate (see CT data)

0 0,375 0,75 1,5
Kilometers



Projection: WGS 1984
Datum: D WGS 1984
Map Designed By: Jonathan Bell
Contact Details: 021 702 2884 / 072 037 3034
Date: 19 November 2020
Drawing: Louis Fourie Precinct

Louis Fourie Precinct
Development
Mossel Bay Local Municipality
Western Cape Province
Contour Map



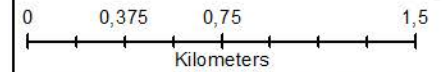
Projection: WGS_1984
Datum: D_WGS_1984
Map Designed By: Jonathan Bell
Contact Details: 021 702 2884 / 072 037 3034
Date: 19 November 2020
Drawing: Louis Fourie Precinct

A3

Louis Fourie Precinct
Development
Mossel Bay Local Municipality
Western Cape Province
Land Cover Map

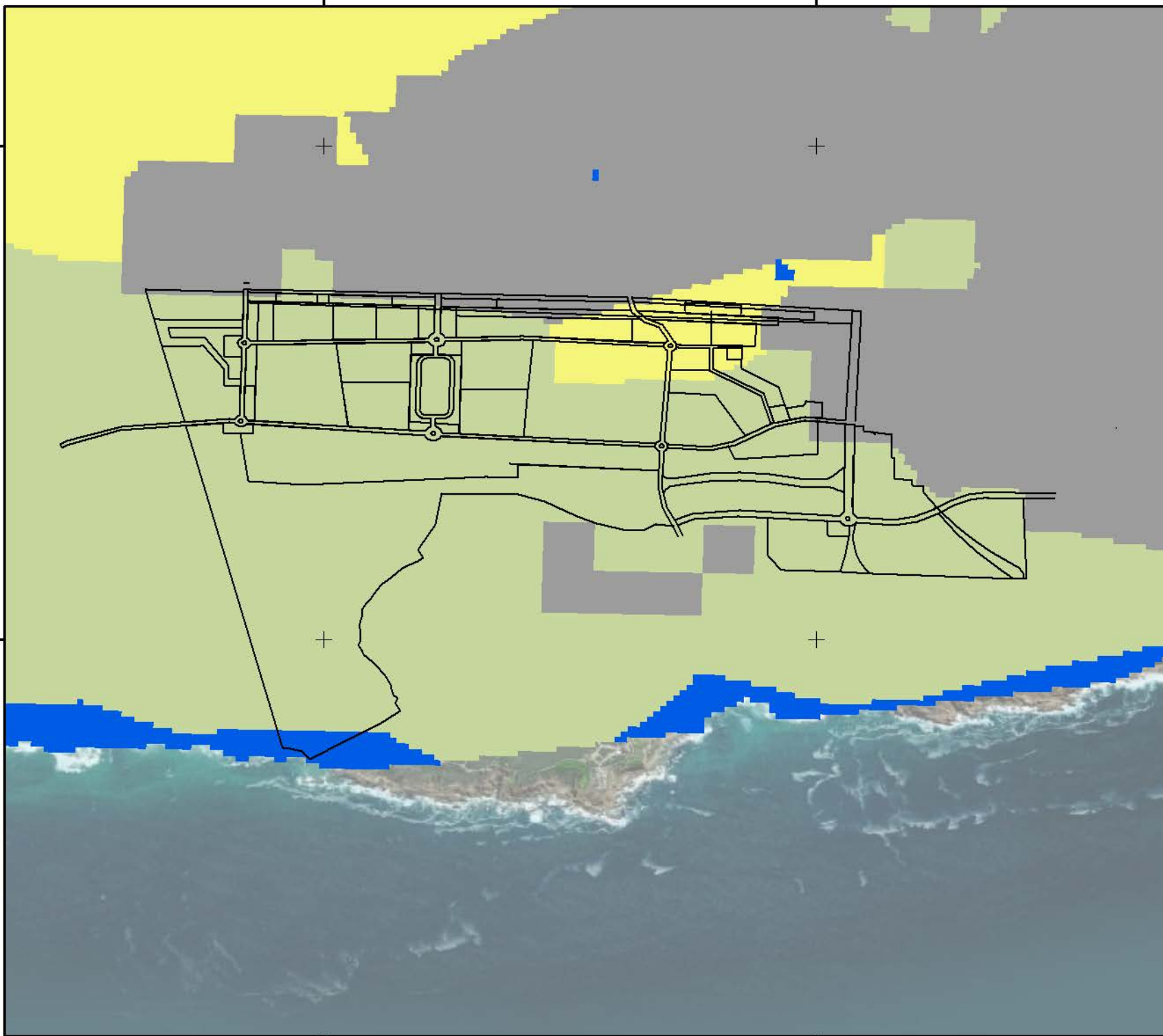
Legend

- Louis Fourie Mixed-Use Development
- Cultivation
- Degraded
- Mines
- Natural
- Plantations
- Urban Built-up
- Waterbodies



Projection: WGS_1984
Datum: D_WGS_1984
Map Designed By: Jonathan Bell
Contact Details: 021 702 2884 / 072 037 3034
Date: 19 November 2020
Drawing: Louis Fourie Precinct

A3



22°4'30"E

22°6'0"E

34°10'30"S

34°10'30"S

34°12'0"S

34°12'0"S

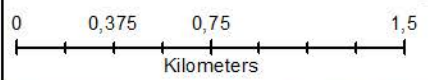
22°4'30"E

22°6'0"E

Louis Fourie Precinct
 Development
 Mossel Bay Local Municipality
 Western Cape Province
 Locality Map

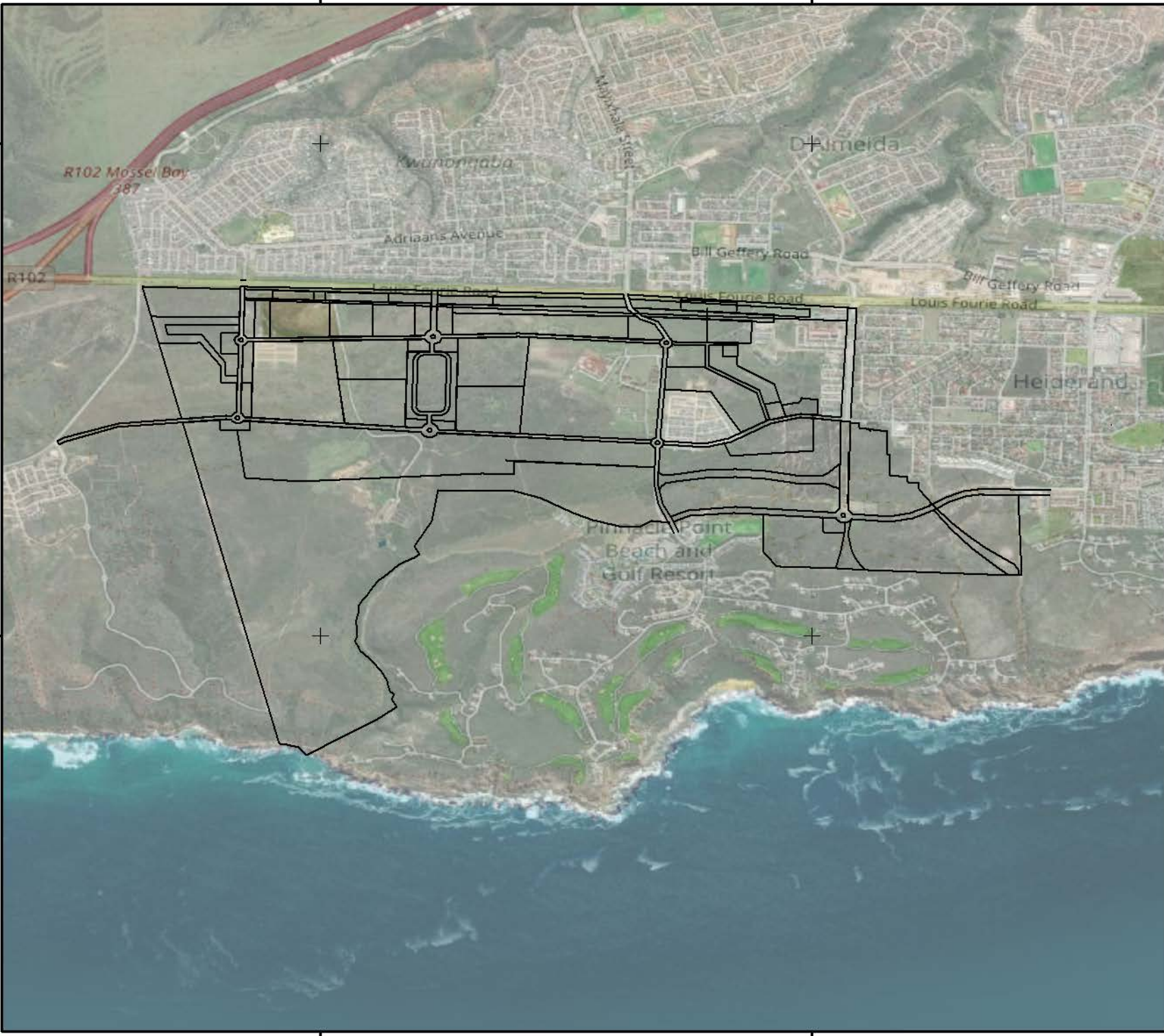
Legend

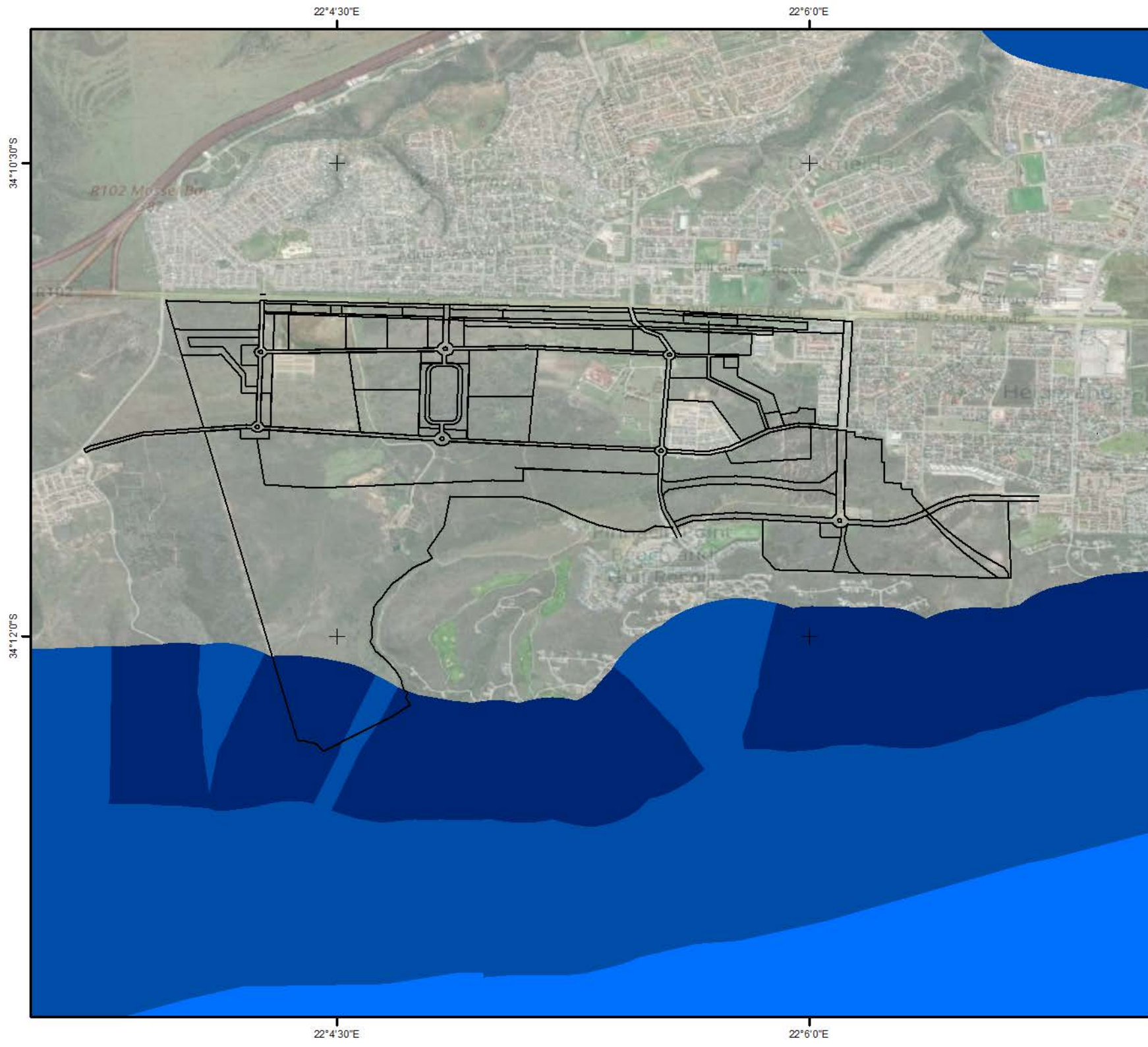
— Louis Fourie Mixed-Use Development



Projection: WGS_1984
 Datum: D_WGS_1984
 Map Designed By: Jonathan Bell
 Contact Details: 021 702 2884 / 072 037 3034
 Date: 19 November 2020
 Drawing: Louis Fourie Precinct

A3





Louis Fourie Precinct
 Development
 Mossel Bay Local Municipality
 Western Cape Province
 NBA Map


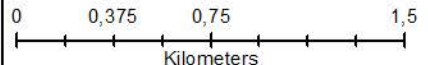
Legend

— Louis Fourie Mixed-Use Development

Benthic & coastal habitat protection level

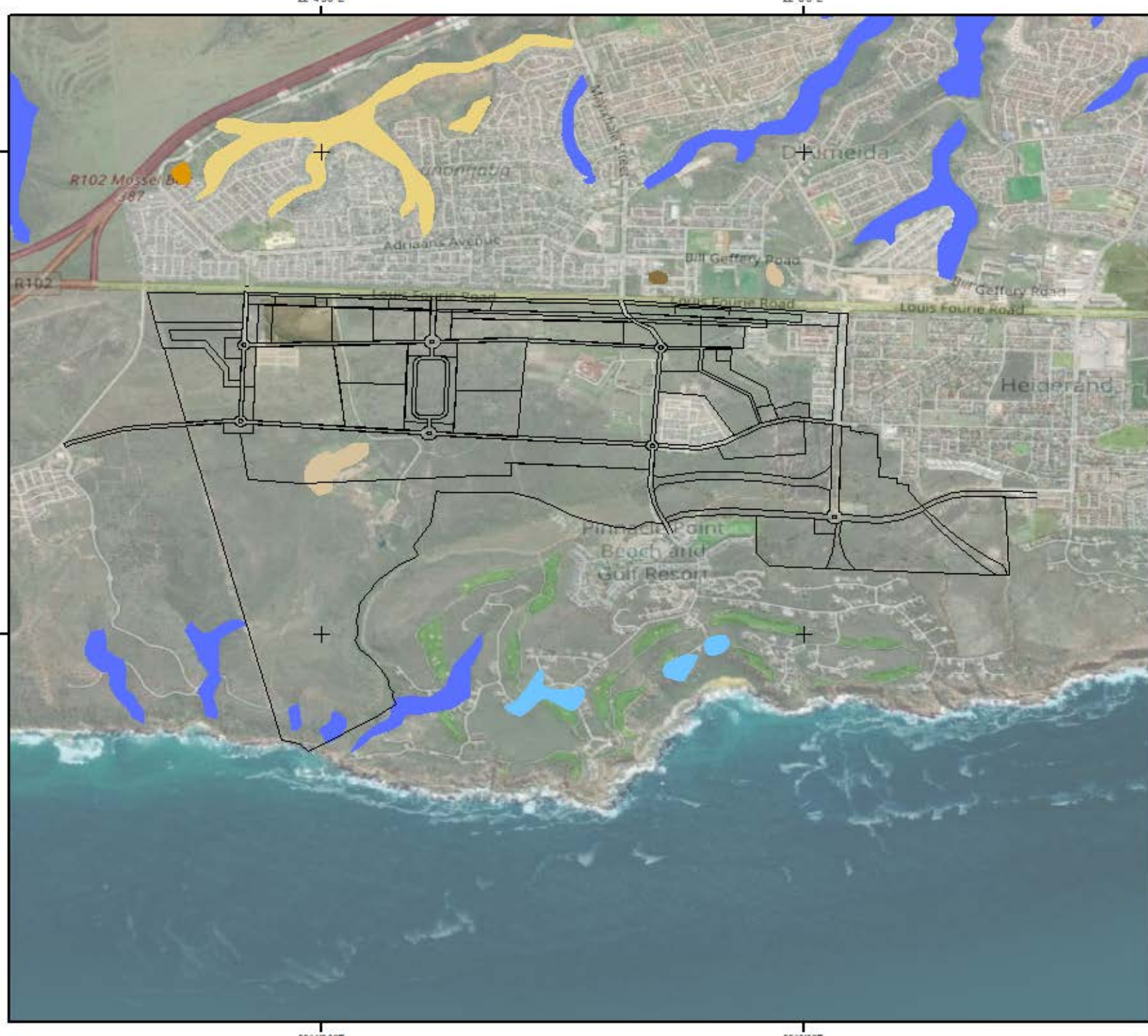
PA_level

- Zero protection
- Hardly protected
- Poorly protected
- Moderately protected
- Well protected


Projection: WGS_1984
 Datum: D_WGS_1984
 Map Designed By: Jonathan Bell
 Contact Details: 021 702 2884 / 072 037 3034
 Date: 19 November 2020
 Drawing: Louis Fourie Precinct

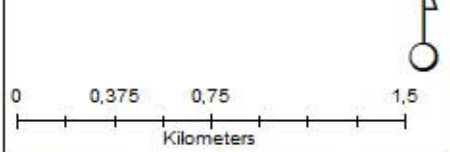
A3



Louis Fourie Precinct
Development
Mossel Bay Local Municipality
Western Cape Province
NFEPA Wetlands Map

Legend

- Louis Fourie Mixed-Use Development
- National wetlands map 4 (NFEPA wetland map) - class
NWCS_L3, NWCS_L4
- Slope: Seep
- Slope: Valleyhead seep
- Slope: Depression
- Valley floor: Channelled valley-bottom wetland
- Valley floor: Unchannelled valley-bottom wetland
- Valley floor: Floodplain wetland
- Valley floor: Depression
- Plain: Floodplain wetland
- Plain: Unchannelled valley-bottom wetland
- Plain: Depression
- Plain: Flat
- Bench: Depression
- Bench: Flat



Projection: WGS 1984
Datum: D WGS 1984
Map Designed By: Jonathan Bell
Contact Details: 021 702 2884 / 072 037 3034
Date: 19 November 2020
Drawing: Louis Fourie Precinct

22°4'30"E

22°6'0"E

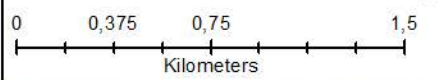
Louis Fourie Precinct
 Development
 Mossel Bay Local Municipality
 Western Cape Province
 NFEPA WMA Map

Legend

- Louis Fourie Mixed-Use Development
- National wetlands map 4 (NFEPA wetland map)
- National wetlands map 4 (NFEPA wetland map) - E estuaries**
- Class**
- Wetland NFEPA wetlands map
- Wetland and estuary FEPA
- River FEPAs**
- Class**
- River FEPA and associated sub-quaternary catchment
- Fish Support Area and associated sub-quaternary catchment
- Phase 2 FEPA and associated sub-quaternary catchment
- Upstream management area

34°1'0"30"S

34°1'0"30"S



34°1'0"30"S

34°1'2'0"S

34°1'2'0"S



Projection: WGS_1984
 Datum: D_WGS_1984
 Map Designed By: Jonathan Bell
 Contact Details: 021 702 2884 / 072 037 3034
 Date: 19 November 2020
 Drawing: Louis Fourie Precinct

A3

22°4'30"E

22°6'0"E



22°4'30"E

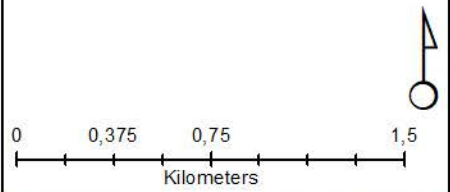
22°6'0"E

34°1'0"30"S

34°1'0"30"S

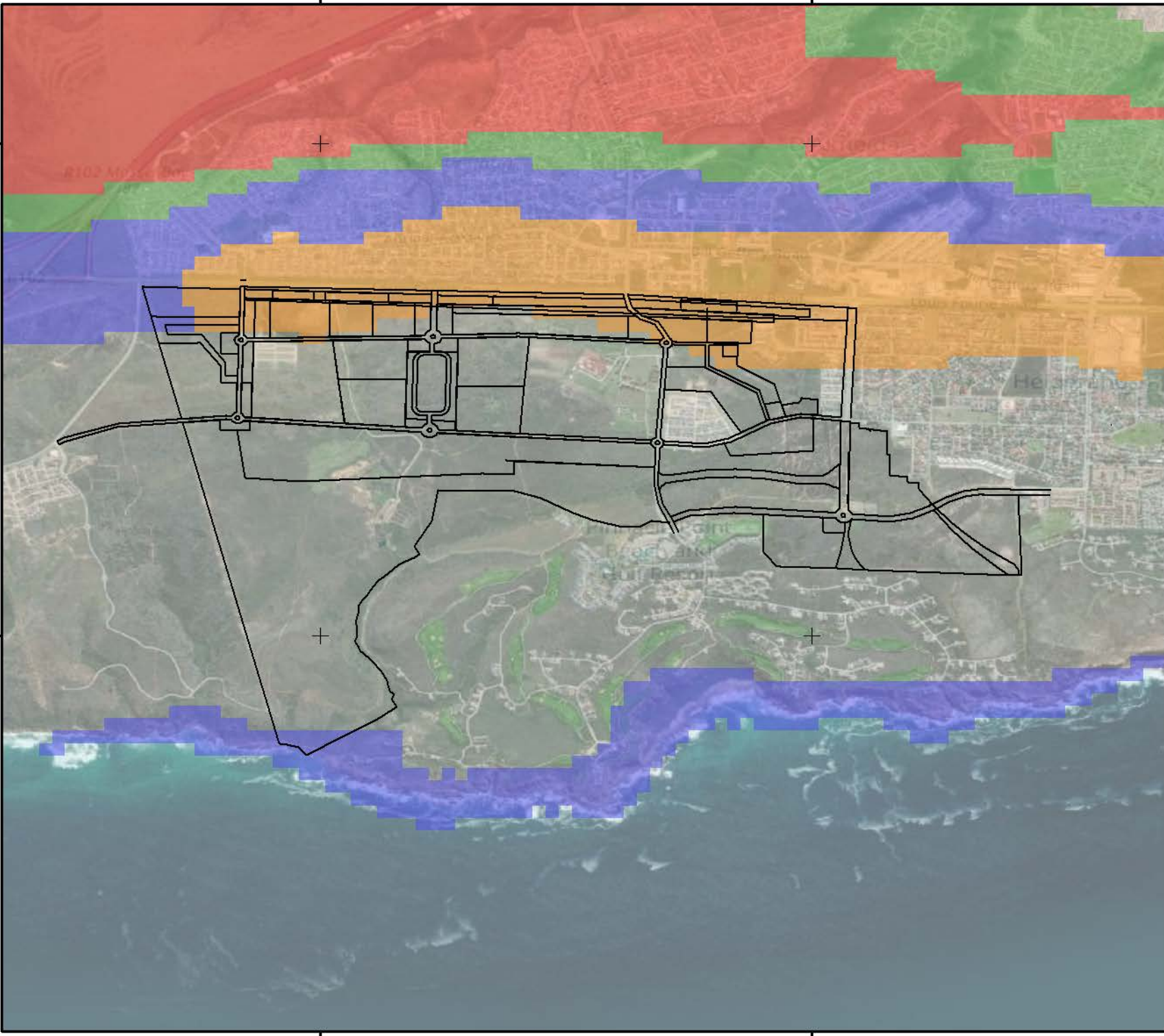
Louis Fourie Precinct
 Development
 Mossel Bay Local Municipality
 Western Cape Province
 Paleo Map

Legend
 — Louis Fourie Mixed-Use Development



34°1'2'0"S

34°1'2'0"S



22°4'30"E

22°6'0"E



Projection: WGS_1984
 Datum: D_WGS_1984
 Map Designed By: Jonathan Bell
 Contact Details: 021 702 2884 / 072 037 3034
 Date: 19 November 2020
 Drawing: Louis Fourie Precinct

A3

22°4'30"E

22°6'0"E

O99S

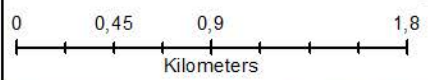
Louis Fourie Precinct
 Development
 Mossel Bay Local Municipality
 Western Cape Province
 Quaternary Catchment Map

34°10'30"S

34°10'30"S

Legend

- Louis Fourie Mixed-Use Development
- O99S
- K10A
- ▭ 500m Regulated Area



34°12'0"S

34°12'0"S



34°13'30"S

34°13'30"S

O99S

22°4'30"E

22°6'0"E

K10A



Projection: WGS_1984
 Datum: D_WGS_1984
 Map Designed By: Jonathan Bell
 Contact Details: 021 702 2884 / 072 037 3034
 Date: 19 November 2020
 Drawing: Louis Fourie Precinct

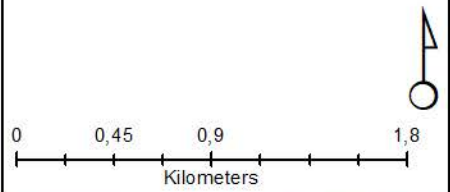
A3

22°4'30"E 22°6'0"E

Louis Fourie Precinct
Development
Mossel Bay Local Municipality
Western Cape Province
Regulated Area Map

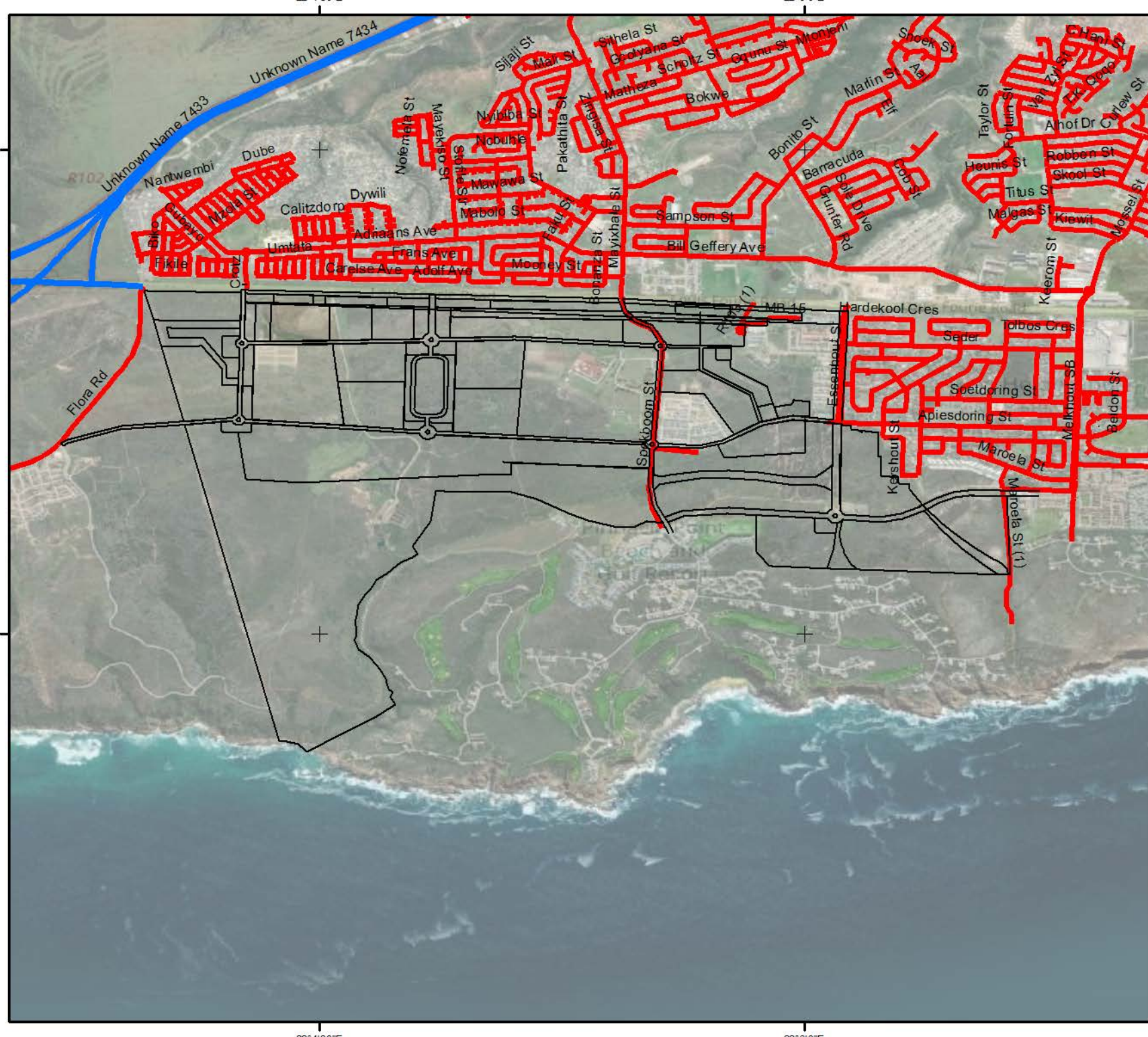
Legend

- Louis Fourie Mixed-Use Development
- 500m Regulated Area
- Channelled valley-bottom wetland
- Depression
- Flat
- Floodplain wetland
- Seep
- Unchannelled valley-bottom wetland
- Valleyhead seep



Projection: WGS_1984
 Datum: D_WGS_1984
 Map Designed By: Jonathan Bell
 Contact Details: 021 702 2884 / 072 037 3034
 Date: 19 November 2020
 Drawing: Louis Fourie Precinct

A3



Louis Fourie Precinct
Development
Mossel Bay Local Municipality
Western Cape Province
Road Network Map

Legend

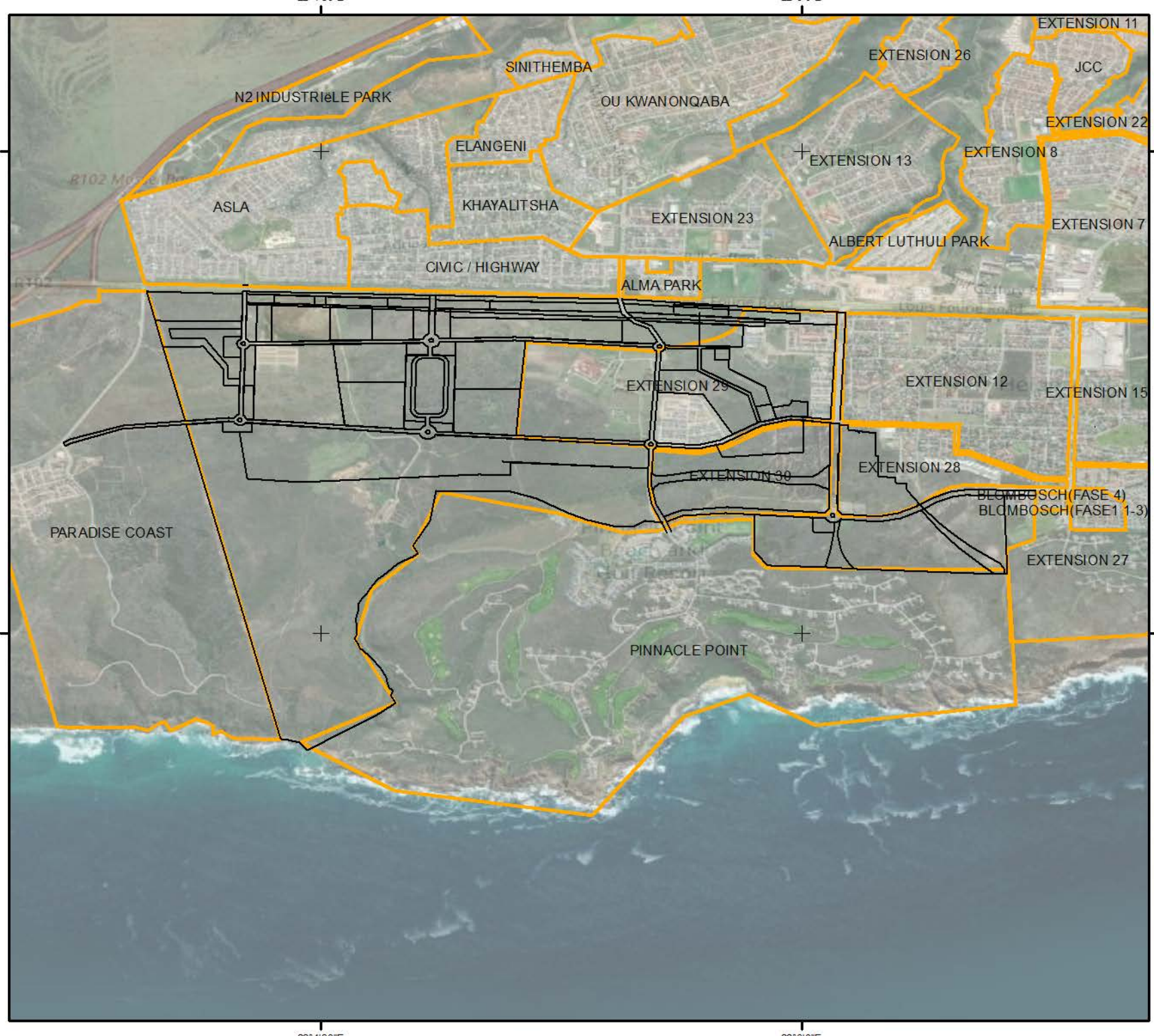
- Louis Fourie Mixed-Use Development
- National Roads
- Local Roads



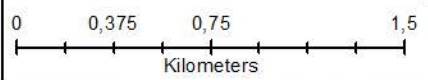
Projection: WGS_1984
Datum: D_WGS_1984
Map Designed By: Jonathan Bell
Contact Details: 021 702 2884 / 072 037 3034
Date: 19 November 2020
Drawing: Louis Fourie Precinct

A3

Louis Fourie Precinct
Development
Mossel Bay Local Municipality
Western Cape Province
Suburbs Map



Legend
 — Louis Fourie Mixed-Use Development
 ▭ Suburbs



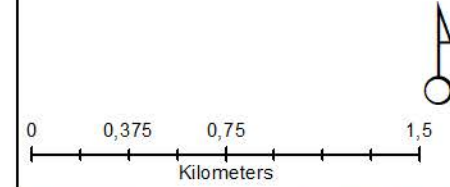
Projection: WGS_1984
 Datum: D_WGS_1984
 Map Designed By: Jonathan Bell
 Contact Details: 021 702 2884 / 072 037 3034
 Date: 19 November 2020
 Drawing: Louis Fourie Precinct

A3

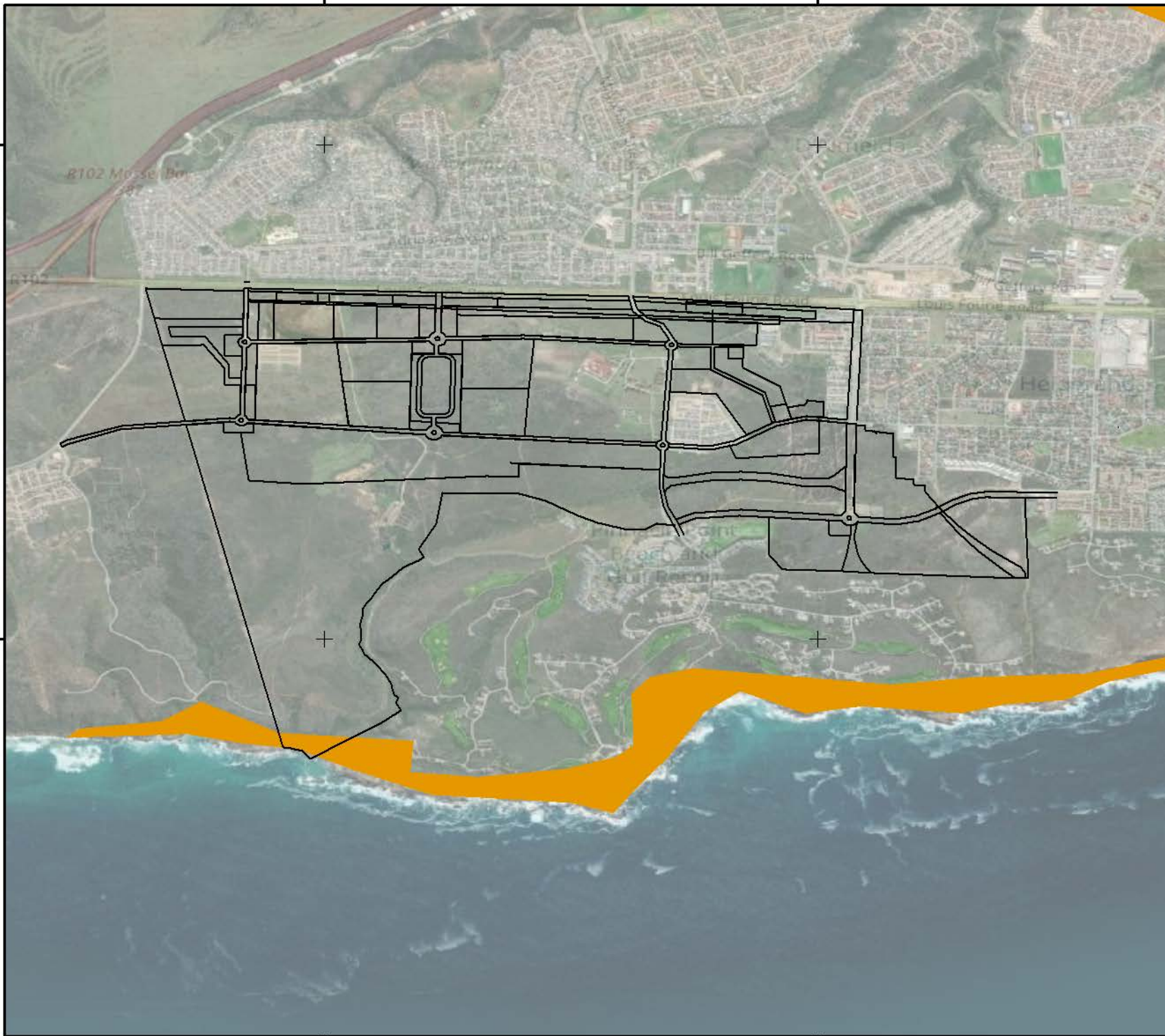
Louis Fourie Precinct
Development
Mossel Bay Local Municipality
Western Cape Province
Threatened Ecosystem Map

Legend

- Louis Fourie Mixed-Use Development
- Critically Endangered
- Endangered
- Vulnerable



Projection: WGS_1984
Datum: D_WGS_1984
Map Designed By: Jonathan Bell
Contact Details: 021 702 2884 / 072 037 3034
Date: 19 November 2020
Drawing: Louis Fourie Precinct



22°4'30"E

22°6'0"E

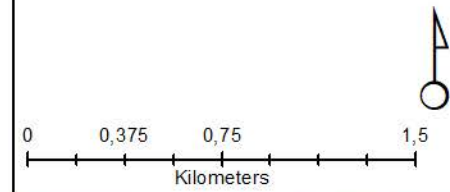
Louis Fourie Precinct
 Development
 Mossel Bay Local Municipality
 Western Cape Province
 Topo Map

34°1'0"30"S

34°1'0"30"S

Legend

- Louis Fourie Mixed-Use Development
- Contours north
- Contours south
- Rivers



34°1'2"0"S

34°1'2"0"S



Projection: WGS_1984
 Datum: D_WGS_1984
 Map Designed By: Jonathan Bell
 Contact Details: 021 702 2884 / 072 037 3034
 Date: 19 November 2020
 Drawing: Louis Fourie Precinct

A3

22°4'30"E

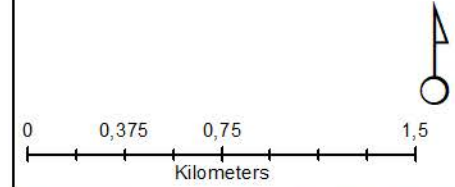
22°6'0"E



Louis Fourie Precinct
Development
Mossel Bay Local Municipality
Western Cape Province
Vegetation Map

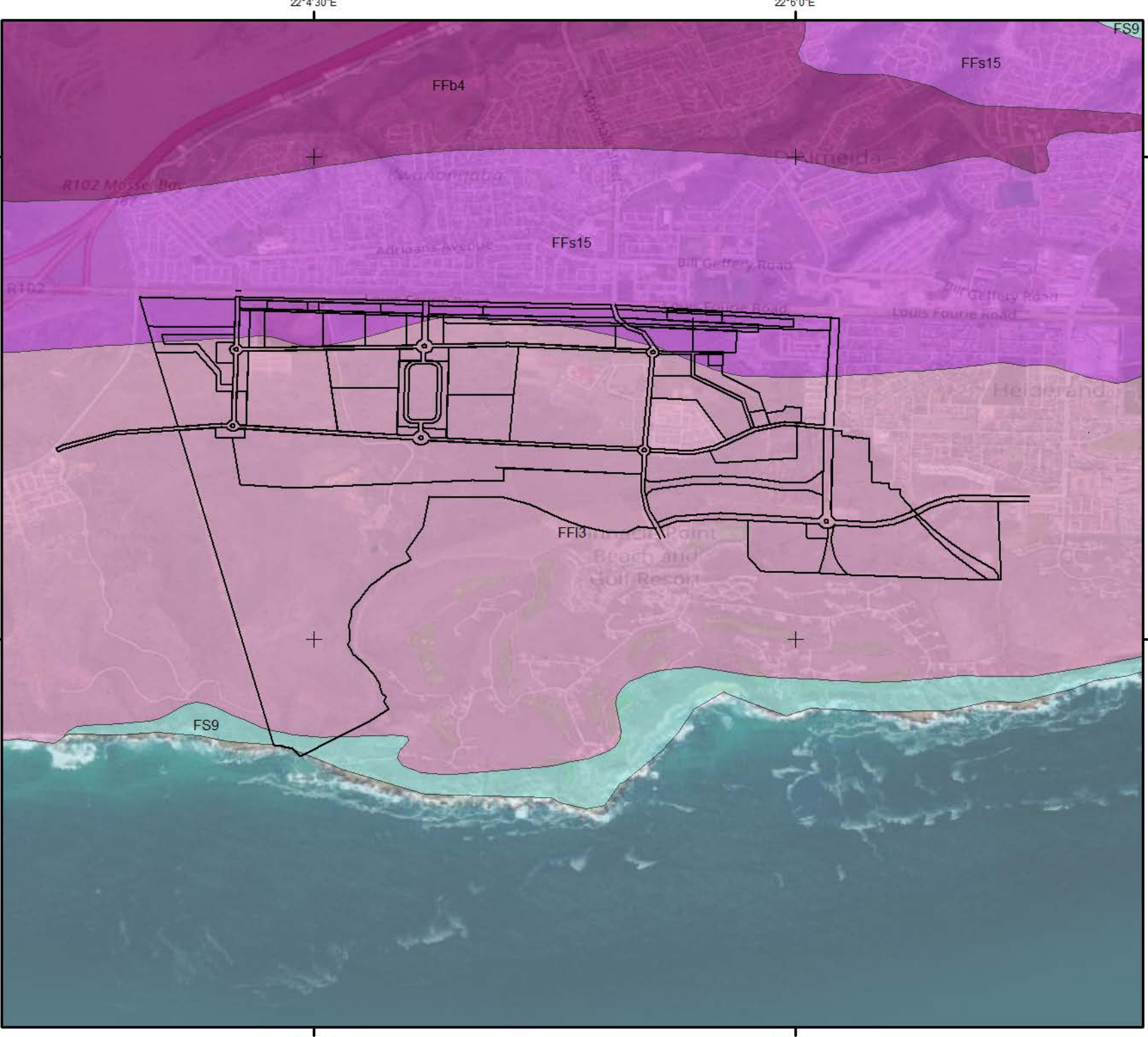
Legend

- Louis Fourie Mixed-Use Development
- FFs 15 North Langeberg Sandstone Fynbos
- FFb 4 Central Coastal Shale Band Vegetation
- FFI 3 Canca Limestone Fynbos
- FS 9 Groot Brak Dune Strandveld



Projection: WGS_1984
Datum: D_WGS_1984
Map Designed By: Jonathan Bell
Contact Details: 021 702 2884 / 072 037 3034
Date: 19 November 2020
Drawing: Louis Fourie Precinct

A3



22°4'30"E

22°6'0"E

34°10'30"S

+

+

Louis Fourie Precinct
 Development
 Mossel Bay Local Municipality
 Western Cape Province
 Veld Fire Risk Map

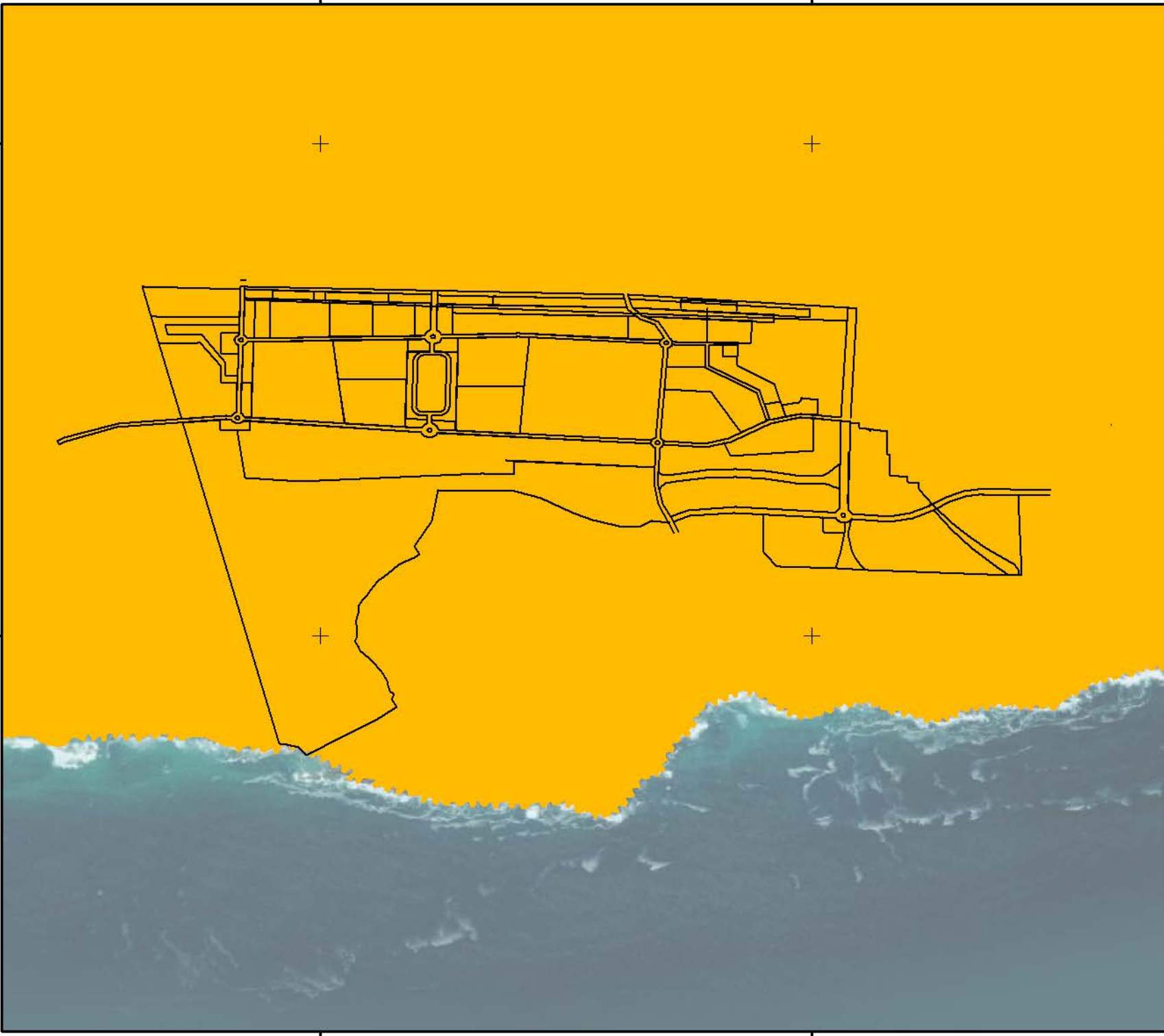
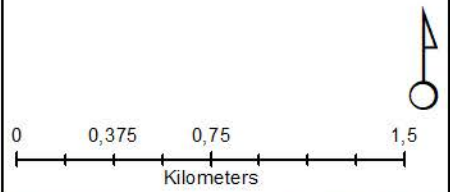
Legend

— Louis Fourie Mixed-Use Development

Veld Fire Risk 2010

OVERALL

- Low
- Medium
- High
- Extreme



34°12'0"S

+

+

34°12'0"S



22°4'30"E

22°6'0"E



Projection: WGS_1984
 Datum: D_WGS_1984
 Map Designed By: Jonathan Bell
 Contact Details: 021 702 2884 / 072 037 3034
 Date: 19 November 2020
 Drawing: Louis Fourie Precinct

A3

22°4'30"E

22°6'0"E

34°10'30"S

34°10'30"S

34°12'0"S

34°12'0"S

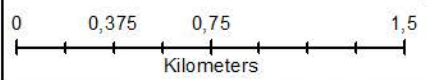
22°4'30"E

22°6'0"E

Louis Fourie Precinct
Development
Mossel Bay Local Municipality
Western Cape Province
Delineation Map

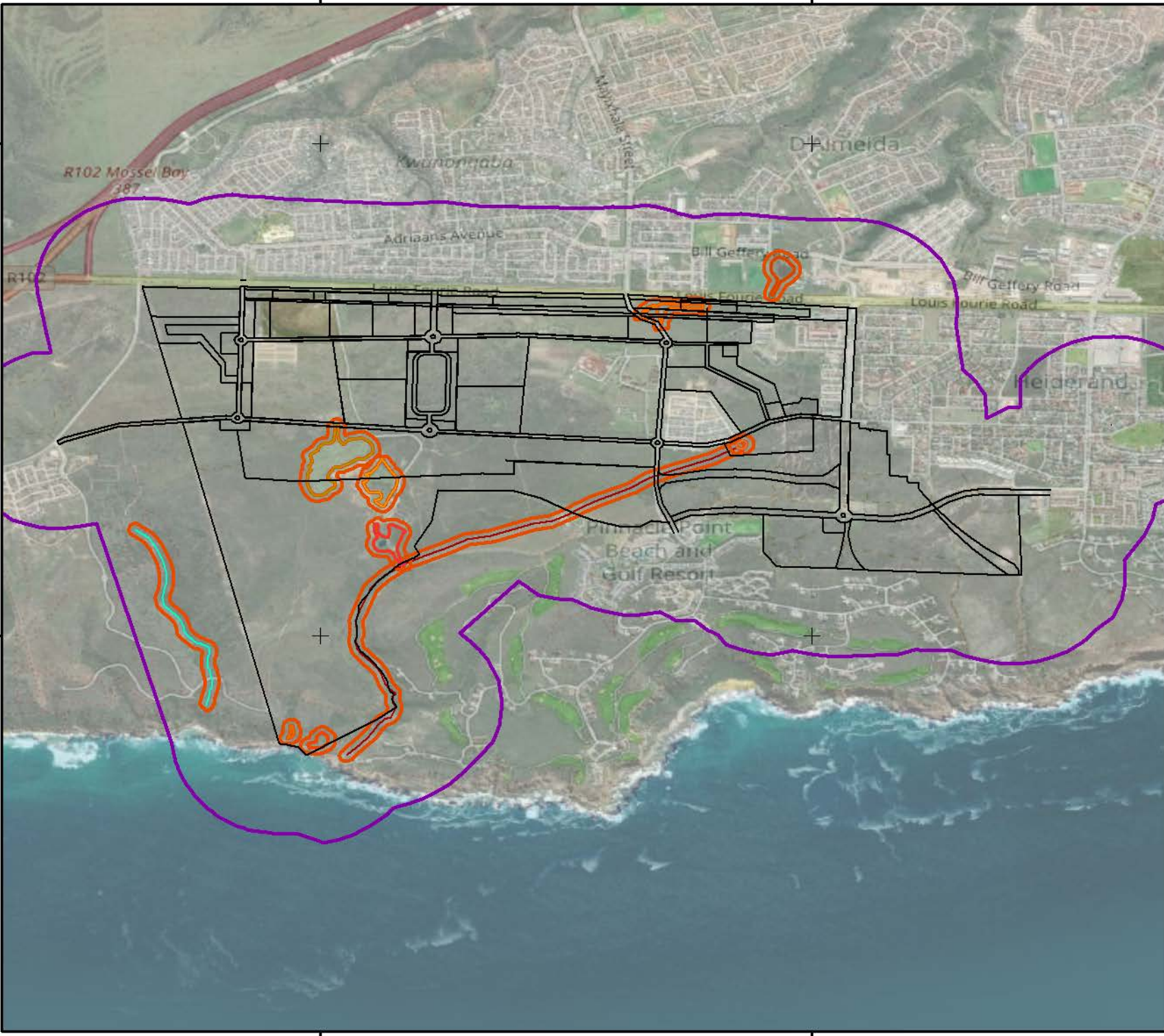
Legend

- Louis Fourie Mixed-Use Development
- 500m Regulated Area
- Wetland 1
- Delineated buffer
- Wetland 2
- Wetland 3
- Wetland 4
- Wetland 5
- Wetland 6
- Wetland 7
- Wetland 8
- Wetland 9
- Wetland 10



Projection: WGS_1984
Datum: D_WGS_1984
Map Designed By: Jonathan Bell
Contact Details: 021 702 2884 / 072 037 3034
Date: 19 November 2020
Drawing: Louis Fourie Precinct

A3



22°4'30"E

22°6'0"E

34°10'30"S

34°10'30"S

34°12'0"S

34°12'0"S

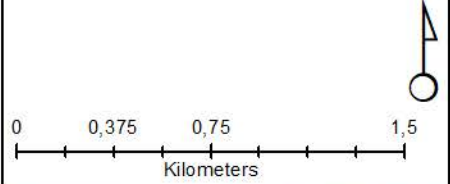
22°4'30"E

22°6'0"E

Louis Fourie Precinct
Development
Mossel Bay Local Municipality
Western Cape Province
Wetlands Map

Legend

- Louis Fourie Mixed-Use Development
- Louis Fourie wetland 1
- Louis Fourie wetland 2
- Louis Fourie Wetland 3
- Louis Fourie wetland 4
- Louis Fourie Wetland 5
- Louis Fourie wetland 6
- Louis fourie wetland 7
- Louis Fourie wetland 8



Projection: WGS_1984
Datum: D_WGS_1984
Map Designed By: Jonathan Bell
Contact Details: 021 702 2884 / 072 037 3034
Date: 19 November 2020
Drawing: Louis Fourie Precinct


A3

Louis Fourie Precinct
Development
Mossel Bay Local Municipality
Western Cape Province
Zoning Map

Legend

— Louis Fourie Mixed-Use Development	INDUSTRIAL ZONE II
AGRICULTURAL ZONE I	INDUSTRIAL ZONE III
AGRICULTURAL ZONE II	MIXED ZONE I
BUSINESS ZONE I	MIXED ZONE II
BUSINESS ZONE II	OPEN SPACE ZONE I
BUSINESS ZONE III	OPEN SPACE ZONE II
BUSINESS ZONE IV	OPEN SPACE ZONE III
BUSINESS ZONE V	OPEN SPACE ZONE IV
BUSINESS ZONE VI	RESORT ZONE I
COMMUNITY ZONE I	RESORT ZONE II
COMMUNITY ZONE II	SINGLE RESIDENTIAL ZONE I
COMMUNITY ZONE III	SINGLE RESIDENTIAL ZONE II
COMMUNITY ZONE IV	SPECIAL ZONE
GENERAL RESIDENTIAL ZONE I	SPLIT ZONE
GENERAL RESIDENTIAL ZONE II	TRANSPORT ZONE I
GENERAL RESIDENTIAL ZONE III	TRANSPORT ZONE II
GENERAL RESIDENTIAL ZONE IV	TRANSPORT ZONE III
GENERAL RESIDENTIAL ZONE V	UNDETERMINED ZONE
INDUSTRIAL ZONE I	UTILITY ZONE

0 0,375 0,75 1,5
Kilometers




Projection: WGS_1984
Datum: D_WGS_1984
Map Designed By: Jonathan Bell
Contact Details: 021 702 2884 / 072 037 3034
Date: 19 November 2020
Drawing: Louis Fourie Precinct

A3

